

# FGS (Forland Geophysical Services)



16000 Barkers Point Ln, Suite 145, Houston, TX 77079, USA

www.forlandgeo.com

## About FGS

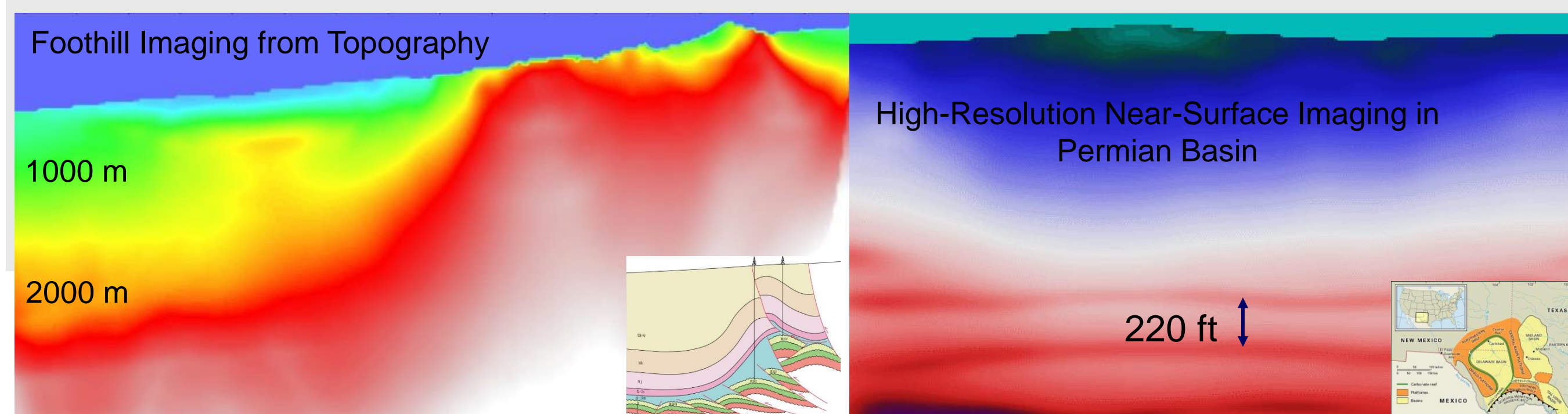
**FGS** is a Houston-based geophysical service company, specializing in imaging through complex near-surface for land with rough topography, OBC/OBN and marine streamer seismic data. Our focus will be on land and shallow water. We provide integrated geophysical services for target-oriented reservoir imaging and characterization, including

### Permian Basin

- Shallow scattering noise and statics caused by the near-surface “filled zones” and localized collapse features (we use robust LCWT de-noising technique and high-resolution tomostatics H-Tomostatics);
- Interbed multiples caused by the near-surface evaporites (we use TomoVel-guided multiple elimination technique).

### Tarim Basin

- Imaging difficulty caused by the near-surface and subsurface complexity (we use joint turning-ray and reflection tomography for velocity model building and TTI PSDM).



## Technology

### Near-surface Imaging

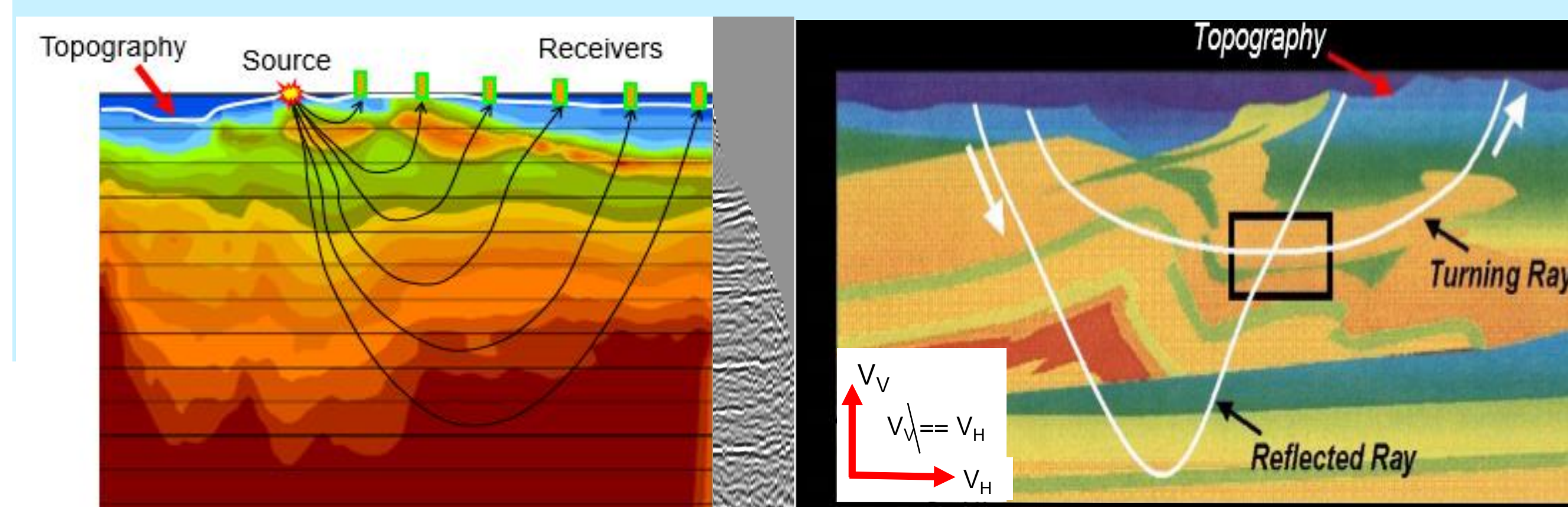
- 2D/3D High-resolution Turning-Ray Tomography
- 2D/3D Joint Refraction-Tomo Statics
- 2D/3D Full-waveform Inversion Independent of Low Frequency
- Surface-wave Inversion for Vs & Density

### Subsurface Imaging

- 2D/3D Noise-robust Automatic Reflection Tomography
- 2D/3D Joint Tomography (Refraction + Reflection)
- 2D/3D TTI PSDM from Topography with Gatherers

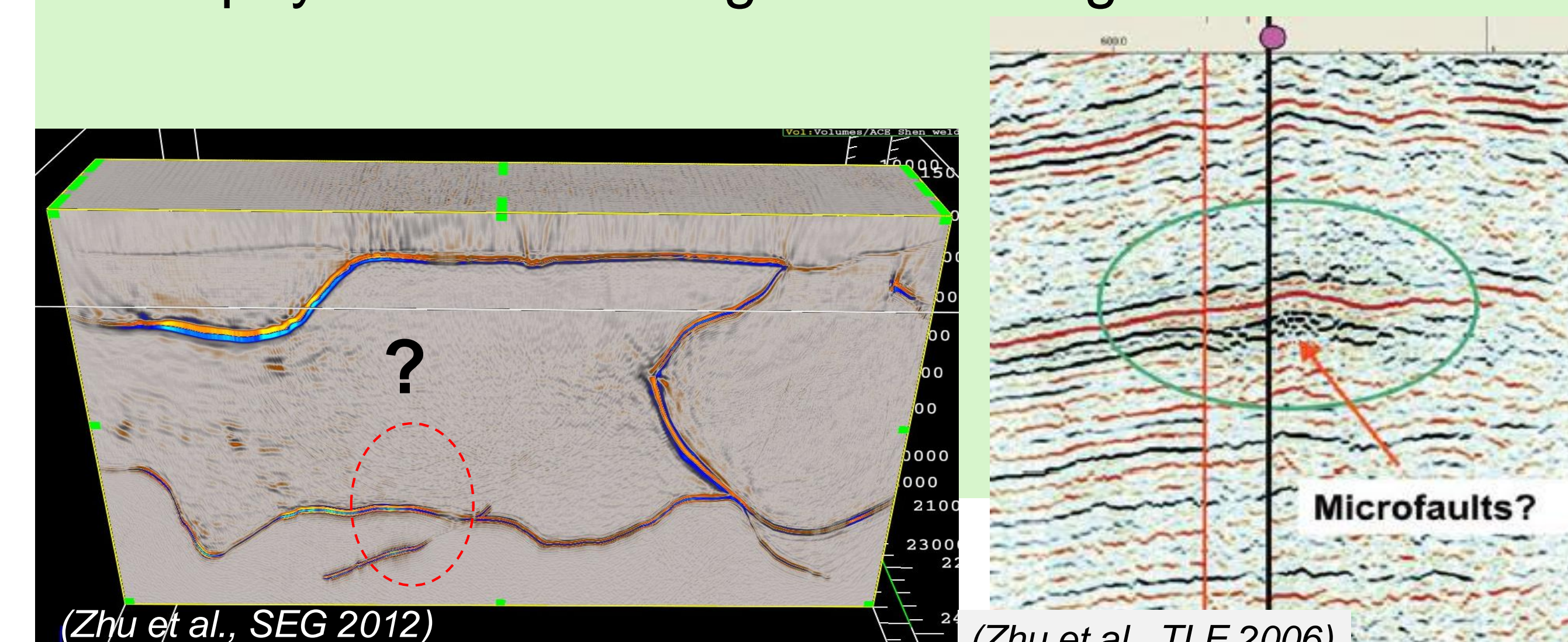
### Advanced Signal Processing

- 1D/2D/3D Aliasing Robust De-noising (LCWT)
- 3D/4D/5D Interpolation for Regularization
- Diffraction Imaging for Fracture Detection
- Surface-wave Removal
- TomoVel Guided Multiple Removal



## Services

- Imaging through Complex Near-Surface in Time/Depth Domain for Reservoir Delineation
- Geo-hazards Prediction using Near-surface and Subsurface Tomography for Reducing Drilling Risks
- Wave-equation Modeling and Imaging for Acquisition Design
- High-resolution Inversion for Reservoir Characterization
- Robust 3D Velocity Model Building for Geopressure Prediction
- OBN/OBC Preprocessing, Processing and Imaging through Gas Clouds
- Geophysical Consulting and Training



## Experience & Case Studies

### 2D

- Permian Basin – Anadarko
- Wyoming overthrust – Anadarko
- Egyptian basalt outcrop – Apache
- Canadian foothills – ConocoPhillips
- Sichuan carbonate outcrop – SINOPEC
- Arabian sand dunes – Aramco
- Bohai Bay gas clouds – CNOOC & ConocoPhillips

### 3D

- Permian Basin – Anadarko
- Foothills and thrust belts – Anadarko
- ConocoPhillips
- CNPC
- SINOPEC
- Surmont heavy oil field – ConocoPhillips
- Alaska permafrost – ConocoPhillips
- GOM subsalt – ConocoPhillips

## Partnership

Focused on near-surface imaging and processing for land, Forland Geophysical Services (FGS) works closely with our clients and partners to provide full cycle of services from seismic data acquisition design to fundamental processing, advanced processing/imaging and high-resolution inversion for improved reservoir interpretation. We listen to our clients' feedback and meet their satisfactions.



## Contact Info

- We can be reached at



16000 Barkers Point Ln, Suite 145  
Houston, TX 77079, USA



+1 832 492 2298



[xli@forlandgeo.com](mailto:xli@forlandgeo.com)

